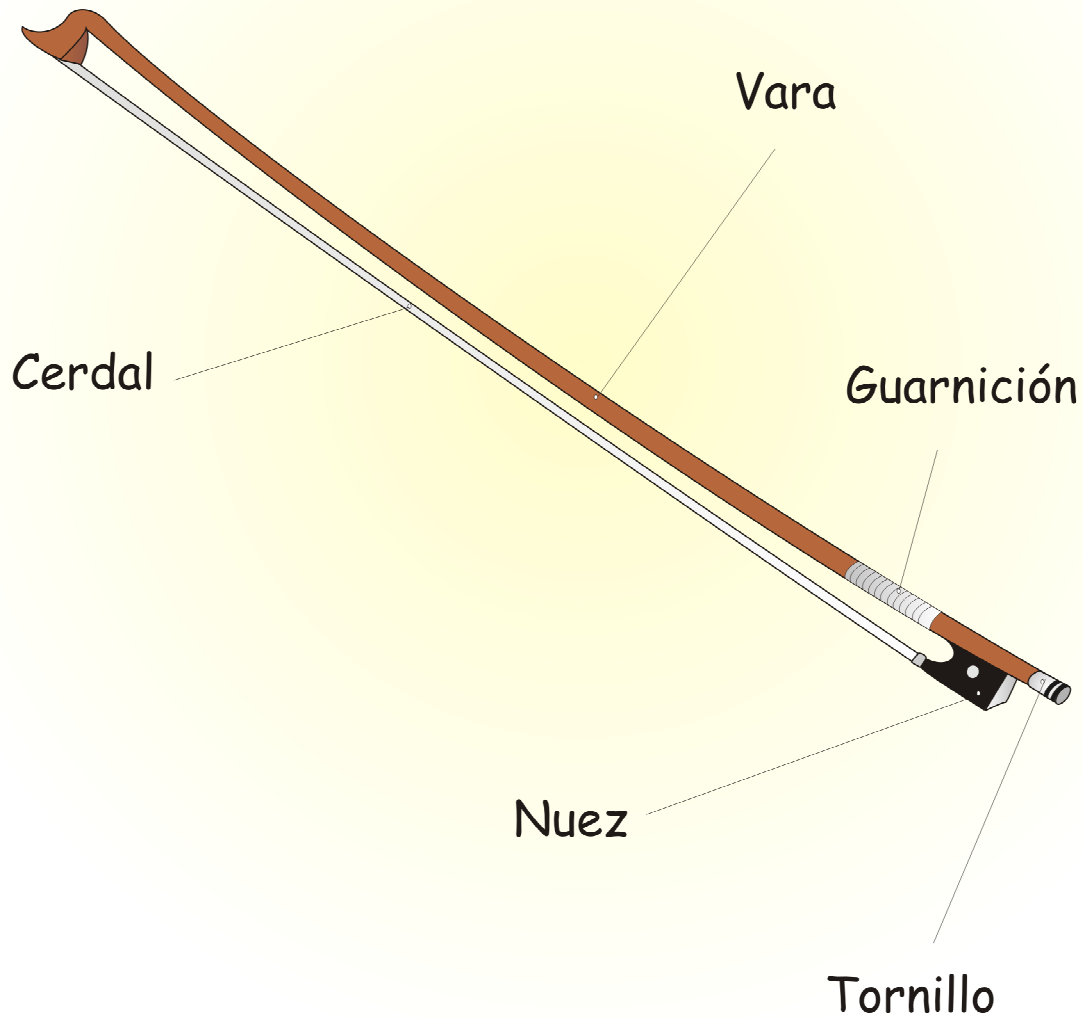


Índice

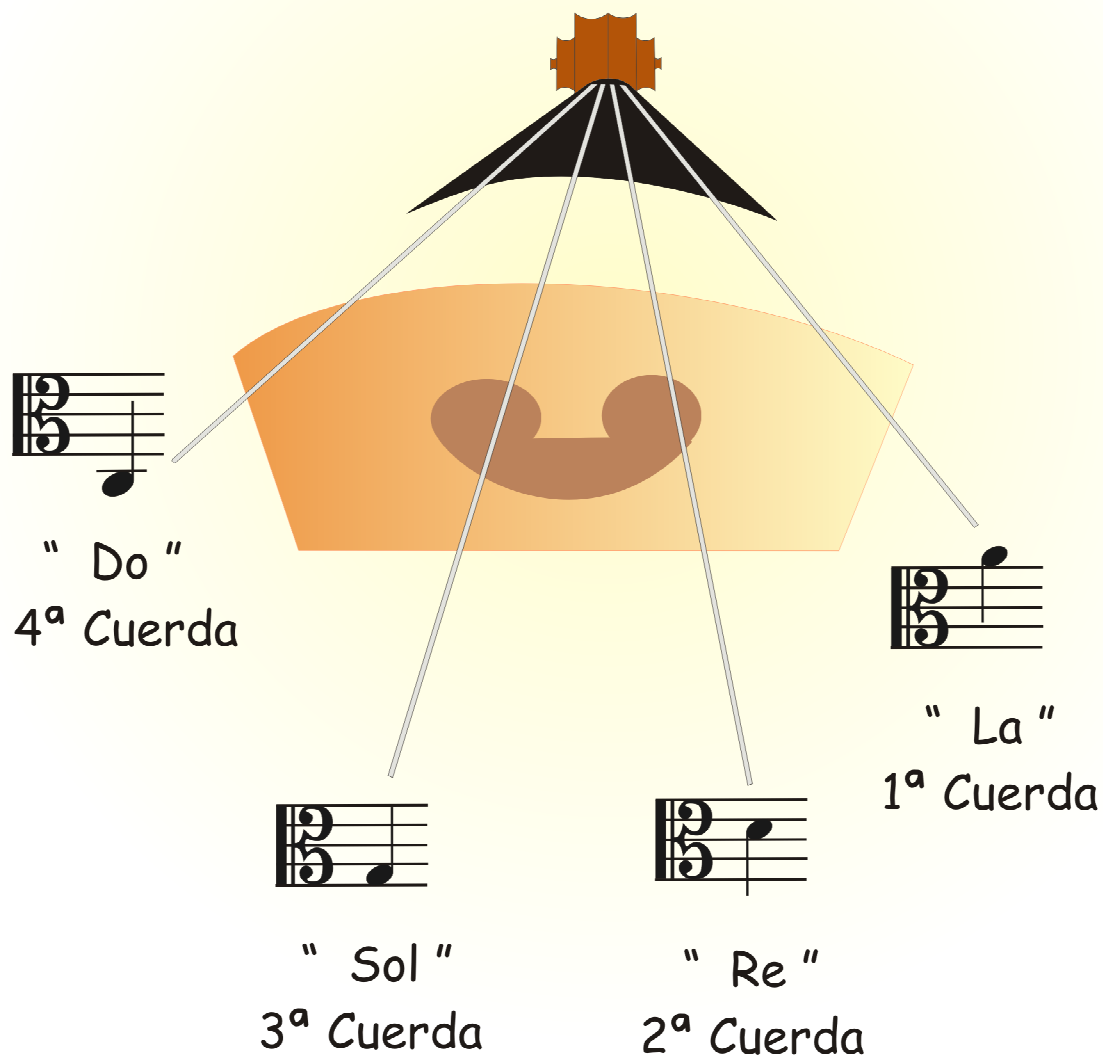
Elementos de tu Arco	6
Partes del Arco	7
Elementos de tu Violín	8
Las Cuerdas del Violín	9
Pequeños Consejos	10
"Tres Gotitas"	13
"Llueve en el Jardín"	15
"El Duende Musical"	17
"La Música del Duende"	19

"Llega la Nieve"	21
"El Muñeco de Nieve"	23
"Melodía para Dormir"	25
"Sueño Musical"	27
"El Sol y las Olas"	29
"La Carrera"	31
"Unicornio"	33
"La Llamada del Elfo"	35
"El Pequeño Elefante"	37
"Marcha de los Elefantes"	39

Elementos de tu Arco

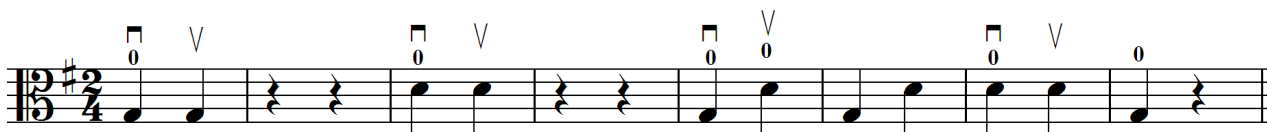


Las Cuerdas de la Viola



Ejercicios Prácticos

1 Nota "Sol" (3ª Cuerda) y Nota "Re" (2ª Cuerda)



Musical notation for exercise 1, showing a sequence of notes on a guitar staff. The key signature is one sharp (F#) and the time signature is 2/4. The notes are: G3 (3rd string, 0), D3 (2nd string, 0), G3 (3rd string, 0), D3 (2nd string, 0), G3 (3rd string, 0), D3 (2nd string, 0), G3 (3rd string, 0), D3 (2nd string, 0). The notes G3 and D3 are marked with a 'V' above them, indicating a vibrato effect. The notes are played in a sequence of quarter notes, with rests between them.

2 Nota "La" (1º Dedo)



Musical notation for exercise 2, showing a sequence of notes on a guitar staff. The key signature is one sharp (F#) and the time signature is 2/4. The notes are: A3 (3rd string, 1st fret), D3 (2nd string, 0), A3 (3rd string, 1st fret), D3 (2nd string, 0), A3 (3rd string, 1st fret), D3 (2nd string, 0), A3 (3rd string, 1st fret), D3 (2nd string, 0), A3 (3rd string, 1st fret), D3 (2nd string, 0), A3 (3rd string, 1st fret), D3 (2nd string, 0). The notes A3 and D3 are marked with a 'V' above them, indicating a vibrato effect. The notes are played in a sequence of quarter notes, with rests between them.

3 Nota "Si" (2º Dedo)



Musical notation for exercise 3, showing a sequence of notes on a guitar staff. The key signature is one sharp (F#) and the time signature is 2/4. The notes are: B3 (3rd string, 2nd fret), D3 (2nd string, 0), B3 (3rd string, 2nd fret), D3 (2nd string, 0), B3 (3rd string, 2nd fret), D3 (2nd string, 0), B3 (3rd string, 2nd fret), D3 (2nd string, 0), B3 (3rd string, 2nd fret), D3 (2nd string, 0), B3 (3rd string, 2nd fret), D3 (2nd string, 0). The notes B3 and D3 are marked with a 'V' above them, indicating a vibrato effect. The notes are played in a sequence of quarter notes, with rests between them.

4 Nota "Do" (3º Dedo)



Musical notation for exercise 4, showing a sequence of notes on a guitar staff. The key signature is one sharp (F#) and the time signature is 2/4. The notes are: C4 (3rd string, 3rd fret), D3 (2nd string, 0), C4 (3rd string, 3rd fret), D3 (2nd string, 0), C4 (3rd string, 3rd fret), D3 (2nd string, 0), C4 (3rd string, 3rd fret), D3 (2nd string, 0), C4 (3rd string, 3rd fret), D3 (2nd string, 0), C4 (3rd string, 3rd fret), D3 (2nd string, 0). The notes C4 and D3 are marked with a 'V' above them, indicating a vibrato effect. The notes are played in a sequence of quarter notes, with rests between them.

5 Notas sobre la 3ª Cuerda



Musical notation for exercise 5, showing a sequence of notes on a guitar staff. The key signature is one sharp (F#) and the time signature is 2/4. The notes are: G3 (3rd string, 0), A3 (3rd string, 1st fret), B3 (3rd string, 2nd fret), C4 (3rd string, 3rd fret), B3 (3rd string, 2nd fret), A3 (3rd string, 1st fret), G3 (3rd string, 0), A3 (3rd string, 1st fret), B3 (3rd string, 2nd fret), C4 (3rd string, 3rd fret), B3 (3rd string, 2nd fret), A3 (3rd string, 1st fret), G3 (3rd string, 0). The notes G3 and A3 are marked with a 'V' above them, indicating a vibrato effect. The notes are played in a sequence of quarter notes, with rests between them.



"La Música del Duende"

Andante

Musical score for guitar in G major (one sharp) and 2/4 time, marked *Andante* and *mf*. The score consists of four staves of music with various fingering and vibrato markings.

Staff 1: *mf*

Staff 2: *mf*

Staff 3:

Staff 4:

Ejercicios Prácticos

1 Negras y Blancas

Musical notation for exercise 1, 'Negras y Blancas'. The piece is in G major (one sharp) and 4/4 time. It consists of two staves. The first staff contains four measures: a quarter note G (0), a quarter note A (0), a quarter note B (0), a quarter note C (0); a half note G (0), a half note A (0); a quarter note B (0), a quarter note C (0), a quarter note D (0), a quarter note E (0); a half note G (0), a half note A (0), followed by a quarter rest. The second staff contains four measures: a half note G (0), a half note A (0), a quarter note B (0), a quarter note C (0); a quarter note D (0), a quarter note E (0), a quarter note F# (0), a quarter note G (0); a quarter note A (0), a quarter note B (0), a quarter note C (0), a quarter note D (0); a half note E (0), followed by a quarter rest.

2 Sol — Si La — Do

Musical notation for exercise 2, 'Sol — Si La — Do'. The piece is in G major (one sharp) and 4/4 time. It consists of two staves. The first staff contains four measures: a quarter note G (0), a quarter note A (2), a quarter note B (0), a quarter note C (2); a quarter note D (0), a quarter note E (2), a quarter note F# (0), a quarter note G (2); a quarter note A (1), a quarter note B (3), a quarter note C (1), a quarter note D (3); a quarter note E (1), a quarter note F# (3), a quarter note G (1), a quarter note A (3). The second staff contains four measures: a quarter note G (0), a quarter note A (2), a quarter note B (1), a quarter note C (0); a quarter note D (1), a quarter note E (3), a quarter note F# (2), a quarter note G (1); a quarter note A (0), a quarter note B (2), a quarter note C (1), a quarter note D (0); a half note E (0), followed by a quarter rest.

3 Re — Fa Mi — Sol

Musical notation for exercise 3, 'Re — Fa Mi — Sol'. The piece is in G major (one sharp) and 4/4 time. It consists of two staves. The first staff contains four measures: a quarter note G (0), a quarter note A (2), a quarter note B (0), a quarter note C (2); a quarter note D (0), a quarter note E (2), a quarter note F# (0), a quarter note G (2); a quarter note A (1), a quarter note B (3), a quarter note C (1), a quarter note D (3); a quarter note E (1), a quarter note F# (3), a quarter note G (1), a quarter note A (3). The second staff contains four measures: a quarter note G (0), a quarter note A (2), a quarter note B (1), a quarter note C (0); a quarter note D (1), a quarter note E (3), a quarter note F# (2), a quarter note G (1); a quarter note A (0), a quarter note B (2), a quarter note C (1), a quarter note D (0); a half note E (0), followed by a quarter rest.

"Sueño Musical"



Moderato

Musical score for guitar in 4/4 time, key of D major (one sharp). The score consists of four staves of music. The first two staves are marked *mf* (mezzo-forte) and the last two are marked *mp* (mezzo-piano). The music features a sequence of chords and melodic lines with fingerings indicated by numbers 1, 2, 3, and 0 (open string). Vertical bar lines with a 'V' above them indicate chord changes. Crescendo and decrescendo hairpins are used to indicate dynamics.

Staff 1: *mf*

Staff 2: *mf*

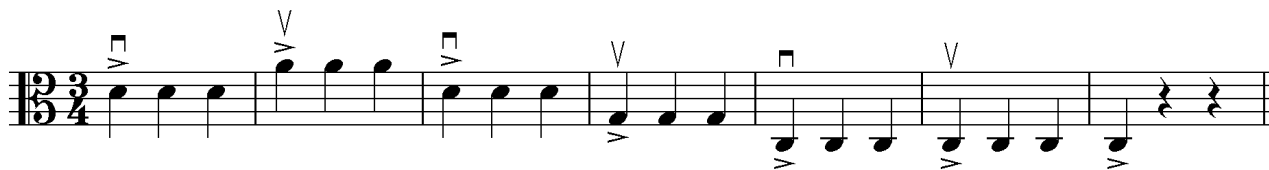
Staff 3: *mp*

Staff 4: *mp*

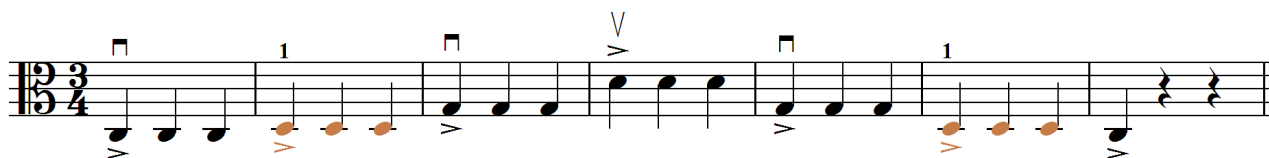
Ejercicios Prácticos

Los ejercicios 1 y 2 son preparatorios para la versión en Trío.

1 Ritmo ternario



2 Nota "Re" 1º Dedo sobre 4ª Cuerda



3 4º dedo sobre la 2ª Cuerda



4 Do natural (♮) sobre la 1ª Cuerda



5 Ejercicio para el arco

